

LAKES INTERNATIONAL ENRICHMENT SERVICES

Enrichment Services Mission Statement

Fostering continuous learning and growth for all students by nurturing their multiple talents and potential.

Vision

The vision of Lakes International Language Academy's (LILA) Enrichment Services is to support, complement, and enrich the school's implementation of the International Baccalaureate (IB) **Primary Years Programme** (PYP), through both in school and extra curricular activities. Services provided for all students include **inquiry-based learning**, world languages, links to community experts, extra-curricular activities, academic choice, and affective guidance. Expanded services offered for **identified** students include, but are not limited to, higher order and critical thinking, extended and/or accelerated academic content, **student grouping** and self-directed learning.

LILA Staff

At LILA, the Director of Special Services and Enrichment Staff collaborate in the development and implementation of enrichment services. The Enrichment Coordinators serve as a resource to teachers, organize the enrichment programming, and may provide direct enrichment services to students.

Why IB at LILA?

"LILA's mission provides for an engaging curriculum that helps students to become compassionate, internationally minded, multi-lingual individuals. IB provides both a framework and philosophy for how LILA tailors this unique Spanish Immersion School found in a semi-rural community. At LILA, students begin a journey that will help them to make connections with the world around them, not only through intense language learning, but also through academic challenge and character development that are integral parts of the IB Primary Years Program."

Kelley Martinez
LILA parent, teacher, and
Enrichment Support

LILA STAFF

Nancy Hawkinson Enrichment Coordinator at LILA

Sra. Nancy began working at LILA in 2008 as an Enrichment Teacher.

She is a graduate from University of West Georgia, Carrollton where she obtained a Master's of Education in Elementary Education and certificates in Integrating Technology into the Curriculum and English as a Second Language.

Enrichment Services Overview

Beginning in kindergarten, Tier 1-**Enrichment Services** provide students with rigorous, engaging, and challenging educational opportunities through the IB curriculum and differentiated instruction. Services are responsive to students' individual strengths and needs so that they will achieve academic and personal growth commensurate with their abilities.

Three tiers of services are offered to LILA students. Students' tiers of services change based on their individual needs which are determined by routine **assessments** and frequent progress monitoring.

Five areas of high achievement capabilities are defined as: intellectual, creative, artistic, leadership capacity and specific academic fields (**Title IX, Part A, Section 9101(22)**). LILA's Enrichment Services concentrate on intellectual and specific academic aptitude in Tiers 2 and 3. The umbrella of services offered at all Tier levels also includes extra-curricular opportunities in other areas of high achievement such as the creative, artistic, and leadership capabilities.

LAKES INTERNATIONAL ENRICHMENT SERVICES

Tier 1 Services

Services in the General Education Classroom-

Students needing additional challenges and enrichment in the **general education classroom** are identified by the classroom teacher. All students are provided enrichment opportunities in the general education setting through **differentiated instruction** such as extension activities, compacting, content acceleration, pre-tests, alternative assignments, alternate assessments, academic choice, and modified instruction.

Tier 2 Services

Small Group, More Intensive Services-

Students needing more intensive enrichment support beyond basic accommodations in the general education classroom are referred to the **Academic Support Team** to assist the teacher with an informal plan to meet the students' needs. The Academic Support Team may create an **assessment profile** based on the unique needs of the child. Based on the assessment results and needs of the student, Tier 2 services are set up by the team, communicated with parents, implemented as appropriate, and monitored regularly.

Tier 3 Services

Intensive Intervention Based on Individualized Learning Programs (ILP)-

Students needing Tier 3 interventions are normally those students consistently scoring above the 98% in 1 academic area, or above 95% in two areas on the **NWEA-MAP Reading and Math** tests. Students showing exceptional abilities in the areas of intellectual, creative, artistic, leadership capacity, and specific academic fields, *AND* are in *need* of a specialized Tier 3 services in order to help them receive an appropriate education will also receive an ILP. Parents, teachers, students, and enrichment personnel are involved in the development, implementation, and review of the ILP.

Extracurricular Activities

There are several extracurricular activities that are used for enrichment purposes. Possible extracurricular activities may include the First Lego League, Word Masters, Mad Science, and Geography Club.

LILA STAFF

Dr. Chris Pellant, Ed.D.

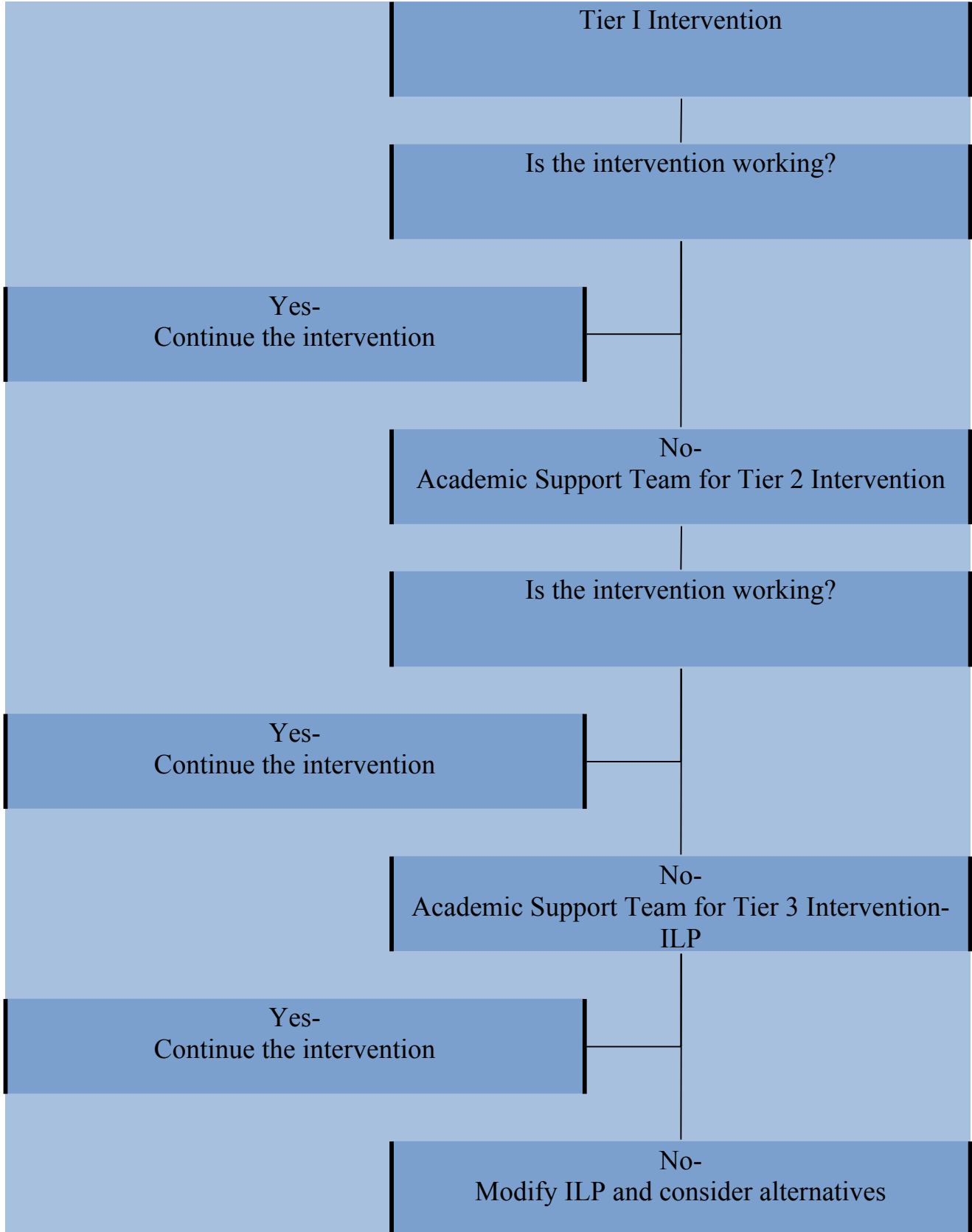
Director of Special Services at LILA

- Over fifteen years in the field of education.
- He has served as a principal, adjunct professor, education specialist for the Minnesota Department of Education, policy writer, vice president for an education company, Director of Special Education, special education coordinator, professional curriculum writer, and special education teacher.
- University of Winnipeg in Winnipeg, Manitoba, Moorhead State University in Moorhead, Minnesota (B. Ed)
- Middle Tennessee State University in Murfreesboro, Tennessee (M. Ed.)
- Doctorate in Education, St. Mary's University in Minneapolis, Minnesota (Ed. D)

"I'm excited about the future of enrichment services at LILA! We are using the Response to Intervention approach to providing enrichment services for students needing additional challenges. This type of problem solving approach provides systematic monitoring to assure students are continually making progress. The school has also done an excellent job providing a great deal of professional development for teachers to equip them with additional tools to differentiate their instruction for all students."

LAKES INTERNATIONAL ENRICHMENT SERVICES

Enrichment Services Flowchart



LAKES INTERNATIONAL ENRICHMENT SERVICES

Identification

Students are identified for Tier 2 and Tier 3 services through a screening process that is multi-dimensional, including teacher observation, parent input, classroom performance, and standardized test information. Parents/guardians who have questions or concerns about their child and services should contact the Director of Special Services.

Screening Tools

NWEA-Measures of Academic Progress

(MAP) Tests- Administered in the fall, winter, and spring each year in grades 2-6.

Minnesota Comprehensive Assessment-II

(MCA-2) - The MN MCA-II test is based on the Minnesota state standards, which define what students should be learning each year. It is administered in the spring to all students in Grades 3-6.

Cognitive Abilities Test (CogAt6)

Administered in spring to all second graders

Assessment Profile- Compiled Assessment Data Form for students referred for additional Tier Services.

LILA STAFF

Kelley Dunbar

Teacher and Enrichment Support at LILA

With more than 18 years of experience in education, Señora Kelley has been involved in various aspects of program development, management and teaching. At LILA she has taught Artes Culturales and Kinder. Currently she is LILA's International Baccalaureate Primary Year's Program Coordinator. She helped lead LILA in its authorization as an IB World School. She taught bilingual elementary in Chicago and Berkeley, California. She was instrumental in building and directing a 21st Century Communication Education Learning Center in Minneapolis. An artist and published poet, Señora Kelley lived in Spain for almost a year. She and her husband, Oscar have four daughters, two of whom attend LILA.

Enrichment Assessment Profile

	99+	98-97	96-95	94-90	89-85	84-0
MAP Math %						
MAP Reading %						
MAP Lang. Usage %						
CogAt 6 %						
AIMS WEB						

**PRESENT LEVELS OF CLASSROOM
PERFORMANCE-**
